



Stanztech Treuenbrietzen Blechformteile GmbH

Treuenbrietzen site | Germany

Leipziger Straße 109a | 14929 Treuenbrietzen | P: +49 (0)33748 / 79 - 301 | F: +49 (0)33748 / 79 - 334 | www.stanztech.de | info@stanztech.de



Within the automotive sector, the company Stanztech Treuenbrietzen Blechformteile GmbH is the specialist for pressed parts with up to 6,300 kN of pressing force and complex welded assemblies. The operating areas:

- Automatic punching from 1,600 to 6,300 kN, with transfer, in part with zigzag cut, from 2,500 to 6,300 kN of pressing force, machine table size up to 4000 x 1400 mm
- Precision punching from 1,250 to 2,500 kN, machine table size 540 x 540 mm
- Manual punching: eccentric- and hydraulic presses with up to 2,000 kN of pressing force
- Cutting of tubes with processing at both ends
- Manual- and robot welding: E, MIG, MAG (partially automated and robot with six axes), TIG-, spot-, projection- and stud welding
- Tool manufacturing and construction: CAD/CAM and 3D CAD (Pro-Engineer, Catia V4.2.4, Catia V5R16, Fastblank V5.3)

The machine equipment at Treuenbrietzen Blechformteile GmbH is ideal for complex sheet-metal forming parts in small-, medium- and large series as well as sophisticated welded assemblies and the installation of complex assemblies and devices. Our in-house tool construction allows us to react quickly and flexibly to the wishes of our customers. Qualified tool support is therefore ensured for every production phase. Of course, technologies not available in-house, such as surface treatment for customers, are conducted with the help of capable cooperation

Data & facts



Founding year	1992
Employees	ca. 215
Revenue	ca. € 42 m.

Managing directors

Dipl.-Ök. Rainer Erdmann
Dipl.-Ing. Markus Naumann

Sales manager

Markus Nettelbeck

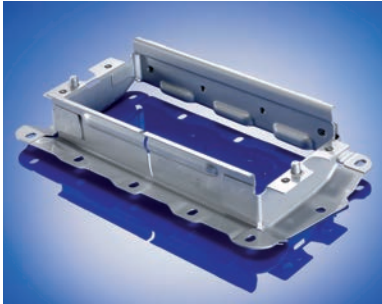
Quality assurance

Certified according to DIN ISO/TS 16949
Certified according to DIN EN ISO 14001:2009



www.stanztech.de
A member of the Kohl Group AG
www.kohl-gruppe-ag.de

We shape ideas



ZSB fastener frame assemblies
300 x 170 x 65 mm



ZSB reinforcement assemblies
350 x 100 x 100 mm



ZSB brake pedal assemblies
320 x 150 x 60 mm



Aluminium module rack parts
500 x 150 x 70 mm



Various compound components
250 x 100 x 100 mm



Spring caps
250 x 250 x 100 mm

partners. Qualified engineers and technicians will be your contact persons. Just-in-time, simultaneous engineering and value analysis are part of our daily work.

We are certified according to ISO/TS 16949:2002 and DIN EN ISO 14001:2005. The first certification according to ISO was issued in 1993.

Products

Materials

Different steel grades, aluminium, stainless steel

Dimensions

Machine table size up to 4000 x 1600 mm,
sheet-metal thickness up to 10 mm

Range

Small- to medium-sized parts, welded assemblies

Industries

Automotive industry, automotive supplier industry,
electrical industry

Special features

Resistance welding systems with nominal output
up to 1200 kVA and up to 150 kN electrode power

Range of services

Forming technology

- Modern automatic punches from the coil with or without transfer, medium piece quantities with hydraulic and eccentric presses
- We process steel-, stainless steel-, aluminium materials and other non-ferrous metals from the coil with up to 10 mm material thickness and 1000 mm coil width (depending on the band cross-cut, maximum 5,200 mm²) on automatic punches with 1,600 to 6,300 kN of pressing force
- In our manual punching workshop we work with eccentric and hydraulic presses with a force of up to 2,000 kN

Joining technology

- In further processing, the parts are joined in assemblies with various welding procedures
- Further component installation is also part of our daily work
- Projection welding with up to 1,200 kVA
- Manual and robot welding technology E, MIG, MAG, TIG
- Resistance welding: Spot welding, projection- and stud welding

Lengthwise cutting of tubes

- Modern machinery consisting of cutting machines
- Tubes from \varnothing 10 to 50 mm
- Piece lengths from 30 to 105 mm
- Wall thicknesses from 1 mm to 8 mm
- For source material up to 7 m

Tool maintenance

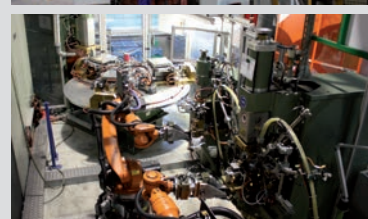
- System supplier with full service
- From tool planning, construction, building and trial to production, further processing and "just-in-sequence" logistics
- Own tool maintenance allows fast and flexible response to customer needs
- Qualified tool support in every production phase
- In-house presses offer ideal possibilities for tool trials and induction



6,300 kN
automatic
punch



4,000 kN
automatic
punch



Special
welding
system